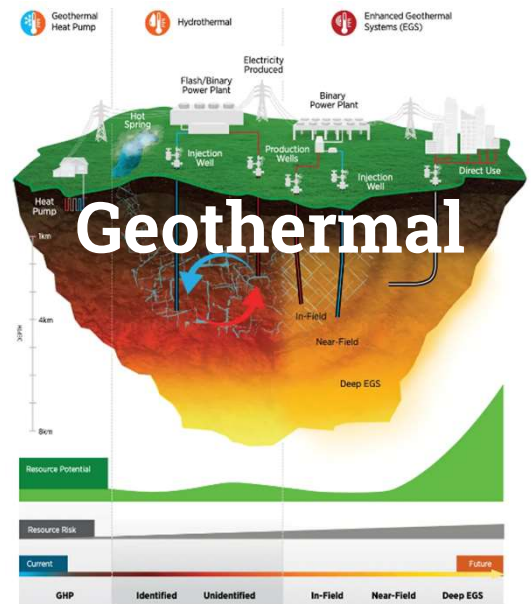
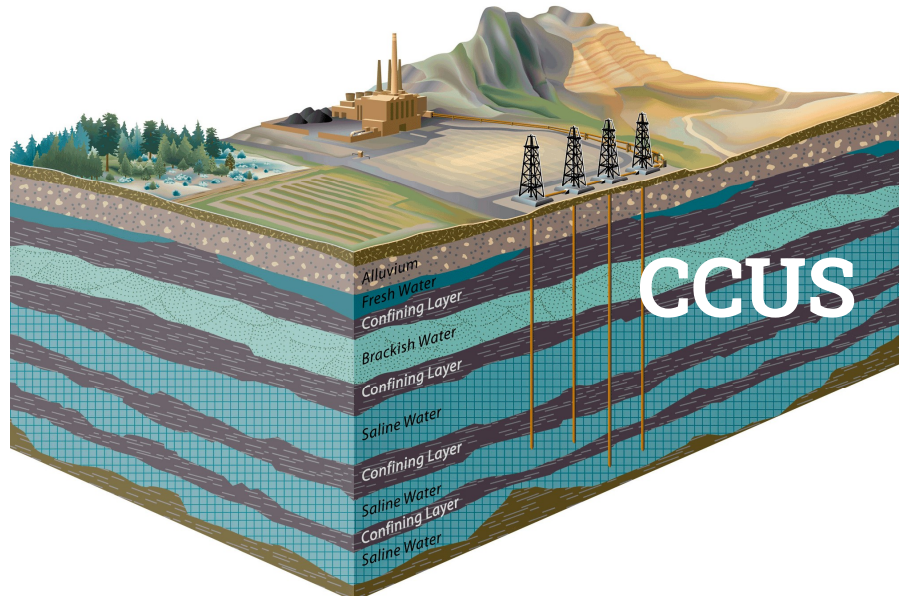
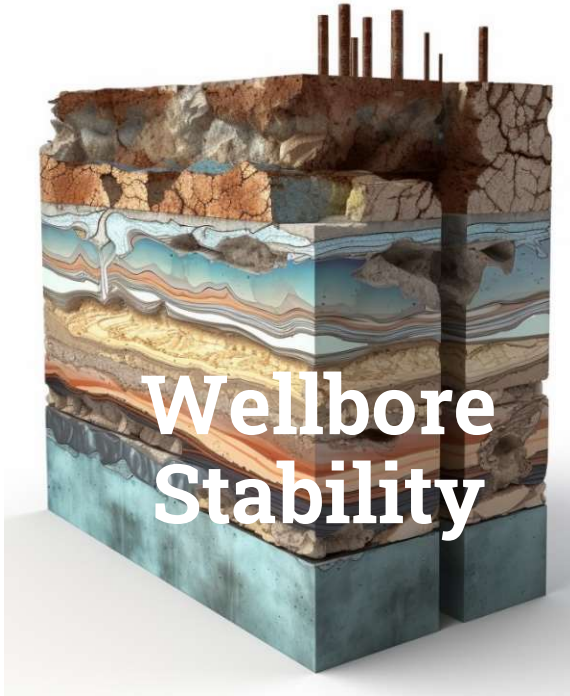


De-Risk with Increased Confidence via Real-Time, Direct Measurements of In Situ Rock Strength and Stress Data



Integrity Insitu

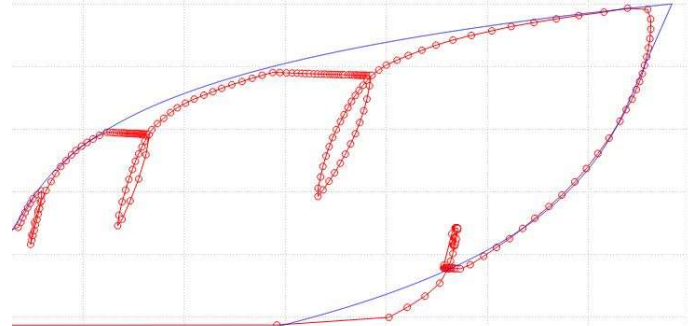
INSITU ROCK STRENGTH DATA

INTEGRITYINSITU.COM

Physical, Mechanical Acquisition of Rock Strength & Stress Magnitudes From Within Your Vertical or Horizontal Wellbores

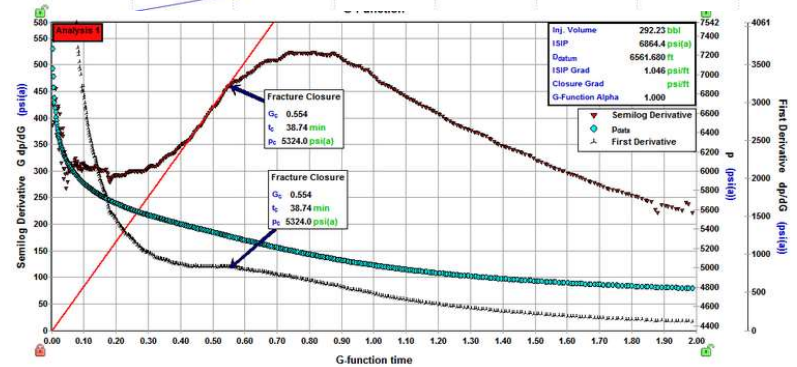
Intelligent Packer

- Instrumented packer measures rock's response to applied force & displacement, **successfully tested to 12,200 psi**



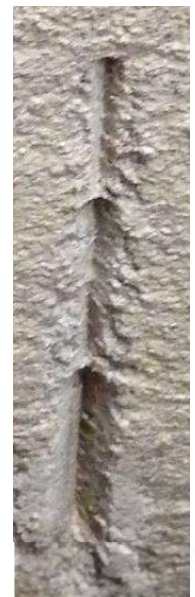
Mini-Frac (available Q2 2025)

- Low or high volume, high pressure fluid injection
- 14,500 psi differential
- Flowback capable, pump from surface or downhole



Shear Head

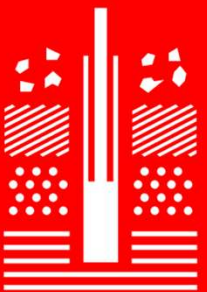
- Downhole combination of a direct shear box test and a 'scratch test', **captures in situ UCS in 7 minutes**



Integrity Insitu

INSITU ROCK STRENGTH DATA

INTEGRITYINSITU.COM



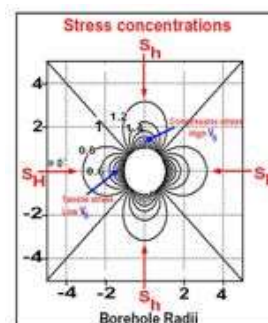
Universal Data that Connects Silos & Crosses Borders

Physically Measured via the HTHP Insight Tool:

- Minimum In Situ Stress
- Permeability
- Average In Situ Stress
- Shear Modulus
- Limit Pressure
- Residual Strength
- Maximum In Situ Stress
- Stress Anisotropy Orientation
- Cohesion
- Friction Angle
- UCS
- Tensile Strength
- Brittleness

Finite Element Modelling Outputs:

- Effective Insitu Horizontal Stress
- Undrained Shear Strength
- Undrained Shear Modulus
- Unloading Shear Strength
- Shear Stiffness Coefficient
- Shear Exponent of Elasticity
- Maximum Shear Modulus
- Insitu Pore Pressure
- Dilation Angle
- Critical State Friction Angle
- Dynamic Viscosity of Pore Fluid



Integrity Insitu

INSITU ROCK STRENGTH DATA

INTEGRITYINSITU.COM

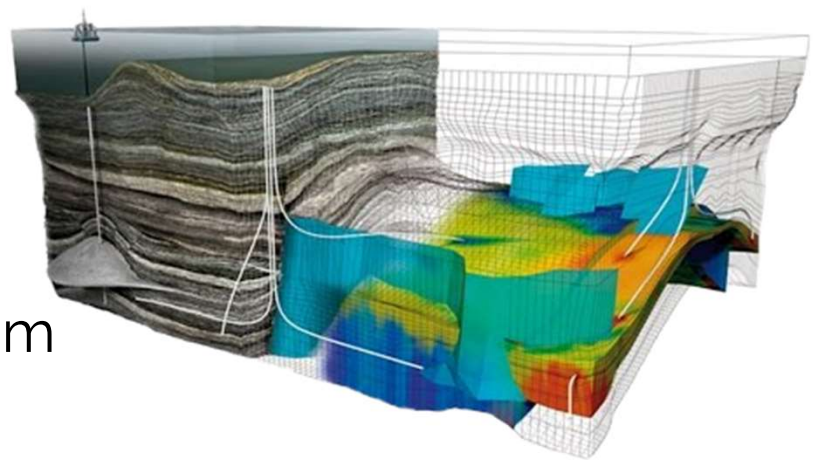
A Powerful Dataset from a Truly Unique Technology

Would you benefit from real-time results?

Would in situ data improve your Mechanical Earth Models?

We physically measure in situ rock strength and stress properties via mechanical testing of the wellbore wall!



Cory Fehr, PMP
President and CEO
(403) 923-2908
cfehr@integrityinsitu.com



www.integrityinsitu.com

info@integrityinsitu.com

 integrity-insitu

 @integrityinsitu  integrityinsitu

 integrityinsitu

#910, 11111 Katy Freeway
Houston, Texas 77079

Unit 1, 2915 10th Avenue NE
Calgary, Alberta T2A 5L4

Integrity Insitu

INSITU ROCK STRENGTH DATA

INTEGRITYINSITU.COM

